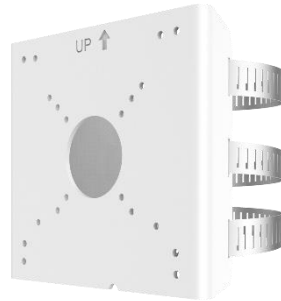


Pole Mount Adapter

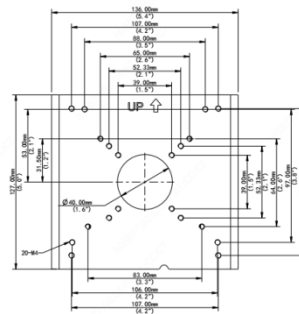
B-UP06-C-IN



Specifications

Bracket	B-UP06-C-IN
Application	Outdoor, pole or rail installation for bullet camera of IPC-B1EX series and IPC-B1PX series, PTZ camera of IPC-P1EX series
Dimensions(L × W × H)	127mmx136mmx62.5mm (5"x5.35"x2.46")
Embrace hoop diameter	67mm~127mm(2.6"~5")
Weight	0.34kg(0.75lb)
Material	Aluminum alloy

Dimensions



www.uniview.com/uniarch

©2021 Zhejiang Uniview Technologies Co.,Ltd. All rights reserved.

*Product specifications and availability are subject to change without notice.